



**Pennine Road, Oldland Common, BS30 8QD**  
03334041188 option 3

**Asking Price £290,000**  
guy.rolfe@moving-you.co.uk

**Freehold**  
www.moving-you.co.uk









## Pennine Road, Oldland Common, Bristol, BS30 8QD

Offered with no chain and available to move straight into is this delightful two bedroom end of terrace home, set in a quiet part of Oldland Common and overlooking green space and a small woodland to the rear creating an idyllic setting.

Inside, the ground floor features an open-plan living/dining room with French patio doors offering a garden view and creating a sociable layout that links neatly with the open kitchen. Upstairs, there is a master bedroom with built in cupboards, a further double bedroom with views to rear and a bathroom fitted with a white suite. The property also benefits from a garage en-bloc, providing useful storage or parking.

Oldland Common sits between Bristol and Bath, giving access to both cities. Nearby, you'll find local green spaces and cycling routes, ideal for getting outdoors at the weekend. The local high streets of Oldland Common and nearby Longwell Green offer everyday shops, cafés and other amenities.

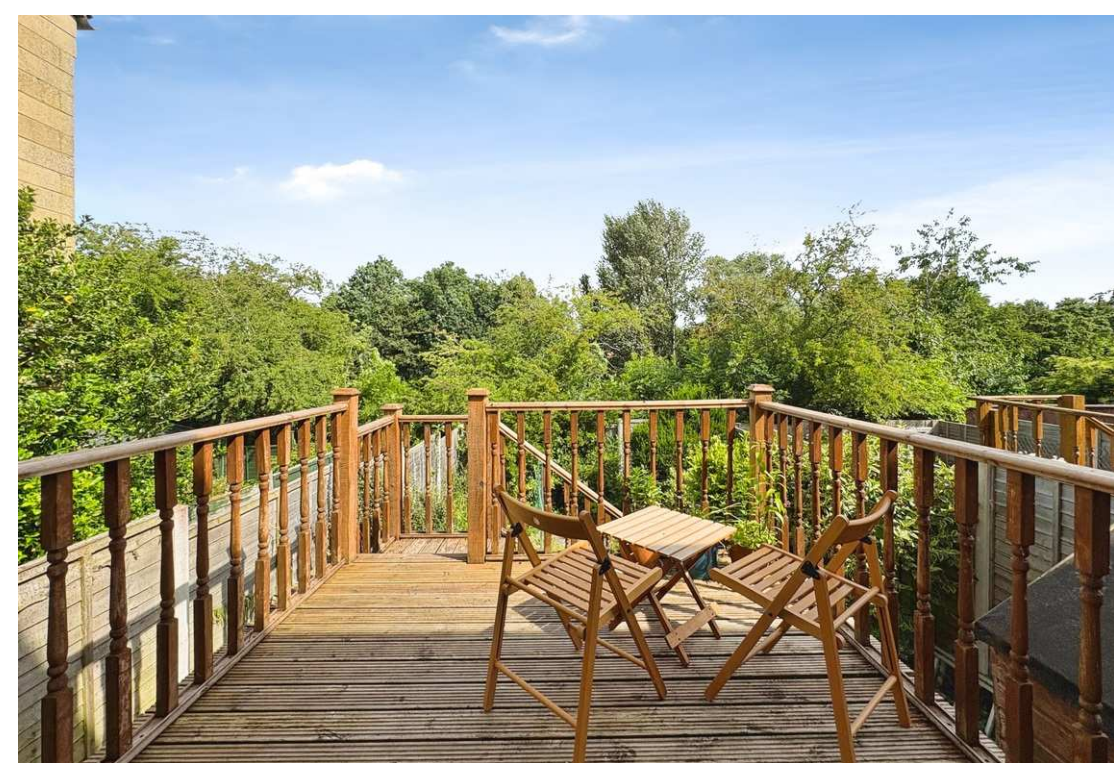
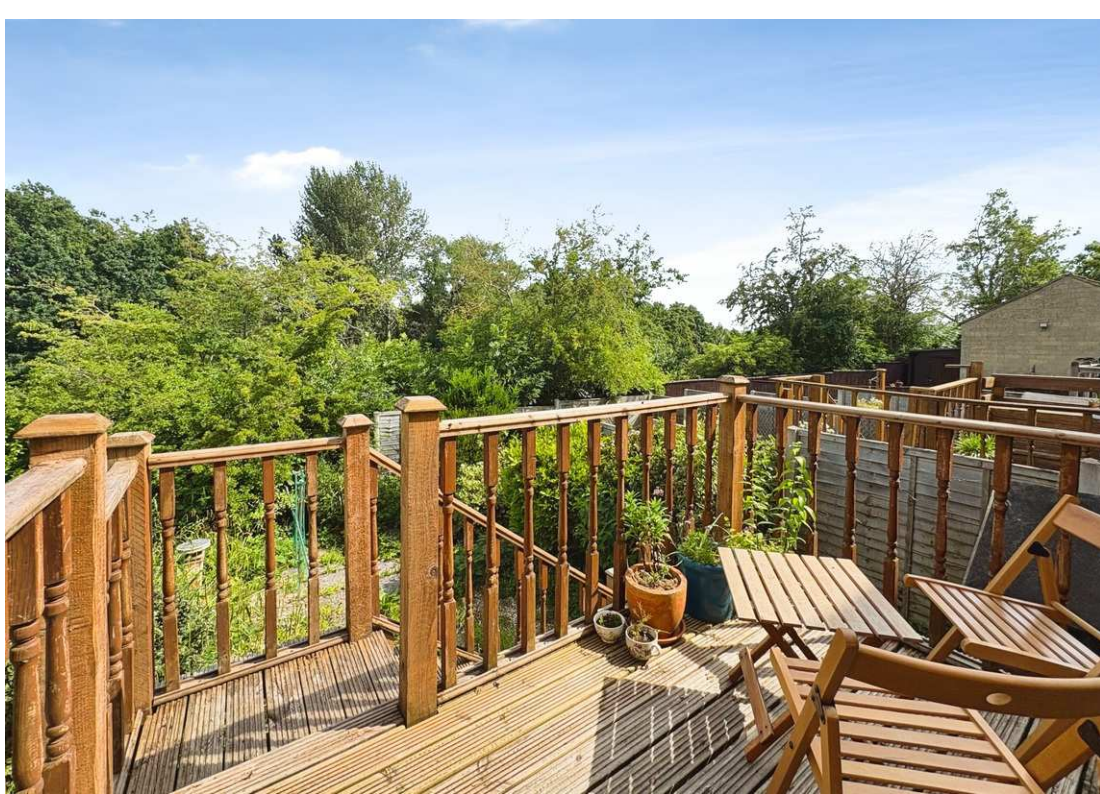
For commuters, Keynsham railway station is a short drive away, with services to Bristol Temple Meads in around 10–15 minutes and to Bath Spa in a similar time, connecting on to London and the wider rail network. Regular bus services run along nearby main routes into central Bristol and Bath.

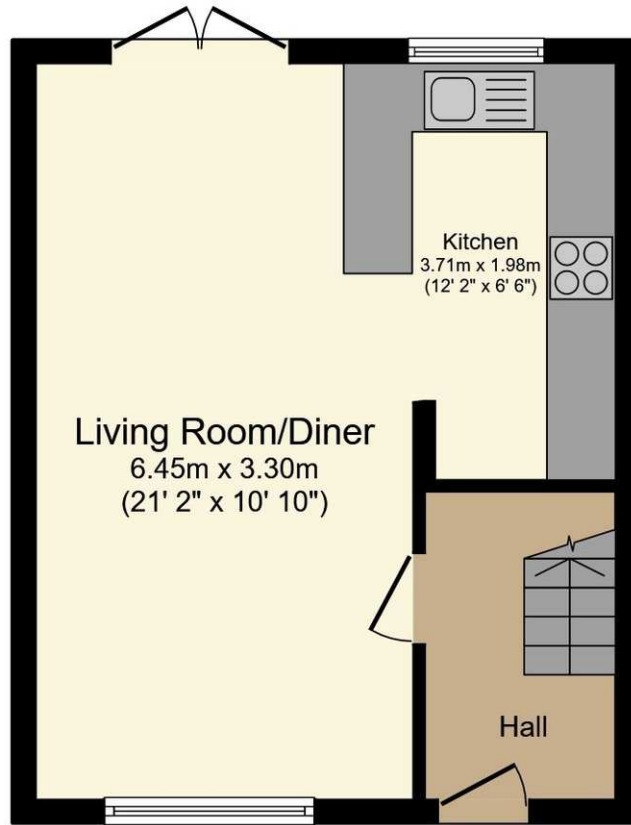
This two-bedroom end of terrace house for sale is well placed for those seeking a home with open-plan living, access to green space and links to both Bristol and Bath.

Council Tax Band B

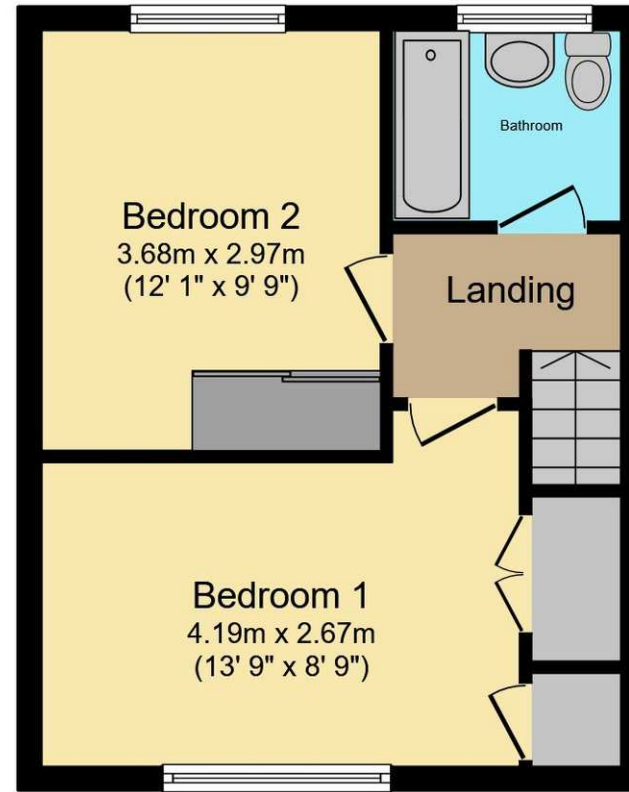








Ground Floor



First Floor

Total floor area: 65.9 sq.m. (710 sq.ft.)

This floor plan is for illustrative purposes only. It is not drawn to scale. Any measurements, floor areas (including any total floor area), openings and orientations are approximate. No details are guaranteed, they cannot be relied upon for any purpose and do not form any part of any agreement. No liability is taken for any error, omission or misstatement. A party must rely upon its own inspection(s). Powered by [www.Propertybox.io](http://www.Propertybox.io)



Guy Rolfe Moving You

03334041188 option 3

[guy.rolfe@moving-you.co.uk](mailto:guy.rolfe@moving-you.co.uk)

PROPERTY MISDESCRIPTIONS ACT 1991: The Agents has not tested any apparatus, equipment, fixtures and fittings, or services, so cannot verify that they are in working order or fit for the purpose. The buyer is advised to obtain verification from his or her Professional Buyer, References to the Tenure of the property are based on information supplied by the Vendor. The agents have not had sight of the title documents. The buyer is advised to obtain verification from their Solicitor. You are advised to check the availability of any property before travelling any distance to view.

[www.moving-you.co.uk](http://www.moving-you.co.uk)