



Poplar Road, Warmley, BS30 5JX

03334041188 option 3

Offers in excess of £300,000

guy.rolfe@moving-you.co.uk

Freehold

www.moving-you.co.uk









Poplar Road, Warmley, Bristol, BS30 5JX

This super quaint character cottage is perfectly suited to first-time buyers looking for a home in good condition with great access to the outdoors.

Inside, the property offers an open-plan kitchen/dining/family area, creating a central space for cooking, dining and relaxing together. The layout lends itself well to everyday living, with room to define separate zones for seating and dining as needed.

Upstairs, there is a master bedroom along with a further second bedroom, ideal as a child's room, guest room or home office.

The location offers a choice of walking and cycling routes, including access to nearby green spaces and paths linking through to the Bristol and Bath cycle network. The area is known for its appealing position between Bristol and Bath, giving you flexibility for both work and leisure.

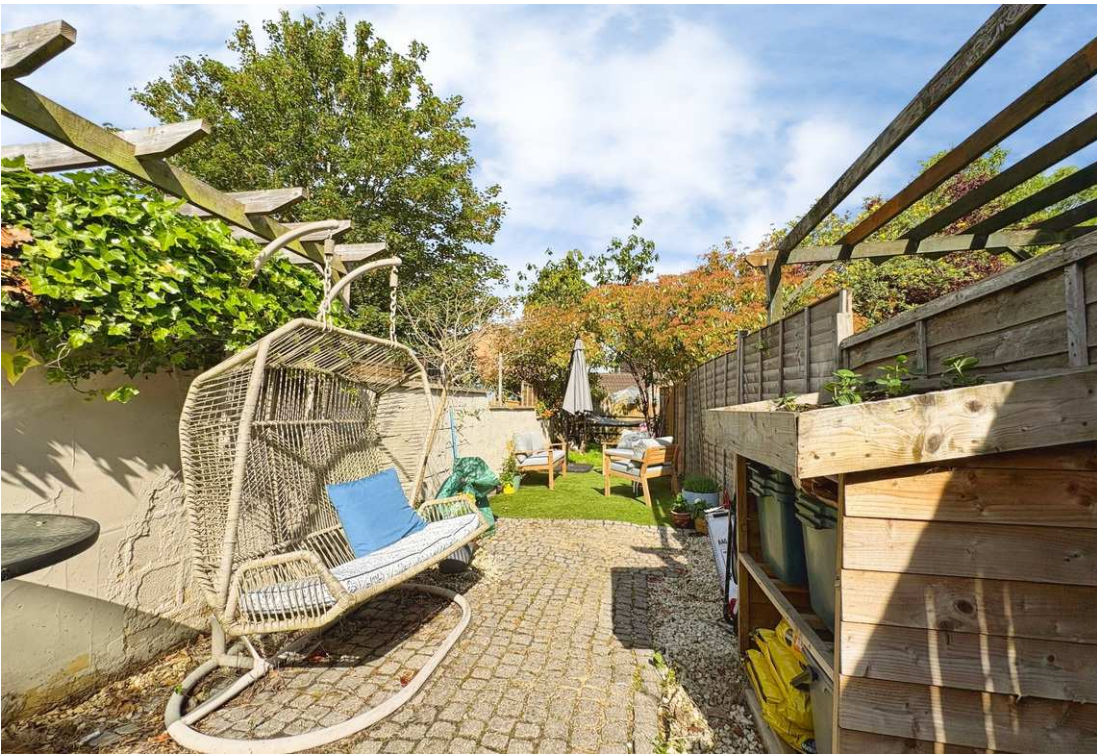
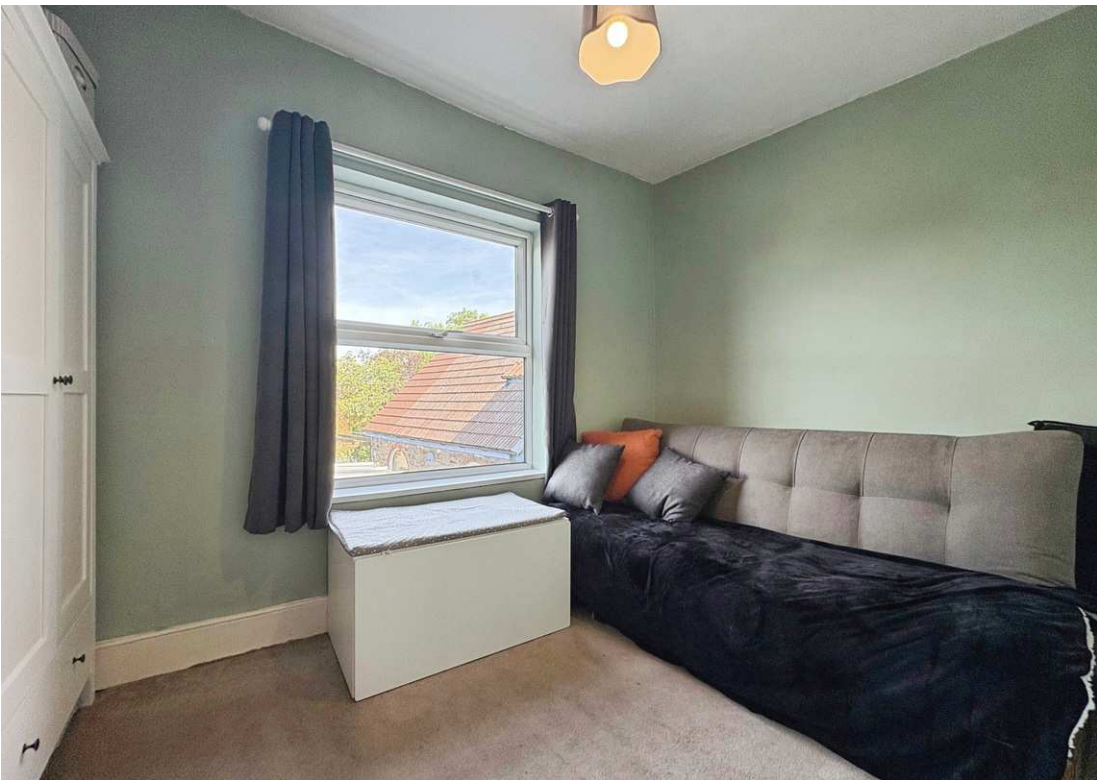
Warmley has local amenities including shops and cafés, with more extensive facilities available in nearby Kingswood and Longwell Green.

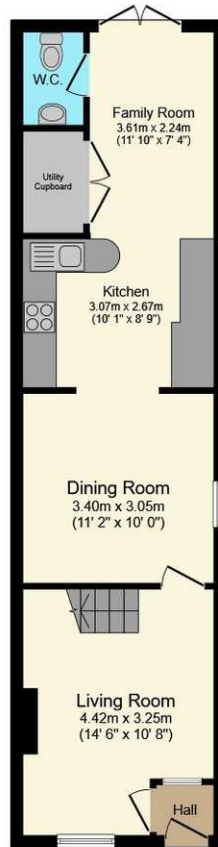
This two-bedroom terraced house offers a practical layout, including living room to front, open-plan living space kitchen/dining/family area's, downstairs W.C and utility/laundry cupboard. With two bedrooms upstairs and a modern family shower room, making it a good option for first-time buyers seeking a home in this part of Bristol.

Council Tax Band B









Ground Floor



First Floor

This floor plan is for illustrative purposes only. It is not drawn to scale. Any measurements, floor areas (including any total floor area), openings and orientations are approximate. No details are guaranteed, they cannot be relied upon for any purpose and do not form any part of any agreement. No liability is taken for any error, omission or misstatement. A party must rely upon its own inspection(s). Powered by www.Propertybox.io



Guy Rolfe Moving You

03334041188 option 3

guy.rolfe@moving-you.co.uk

PROPERTY MISDESCRIPTIONS ACT 1991: The Agents has not tested any apparatus, equipment, fixtures and fittings, or services, so cannot verify that they are in working order or fit for the purpose. The buyer is advised to obtain verification from his or her Professional Buyer, References to the Tenure of the property are based on information supplied by the Vendor. The agents have not had sight of the title documents. The buyer is advised to obtain verification from their Solicitor. You are advised to check the availability of any property before travelling any distance to view.

www.moving-you.co.uk