



Russell Avenue, Kingswood, BS15 9QF
03334041188 option 3

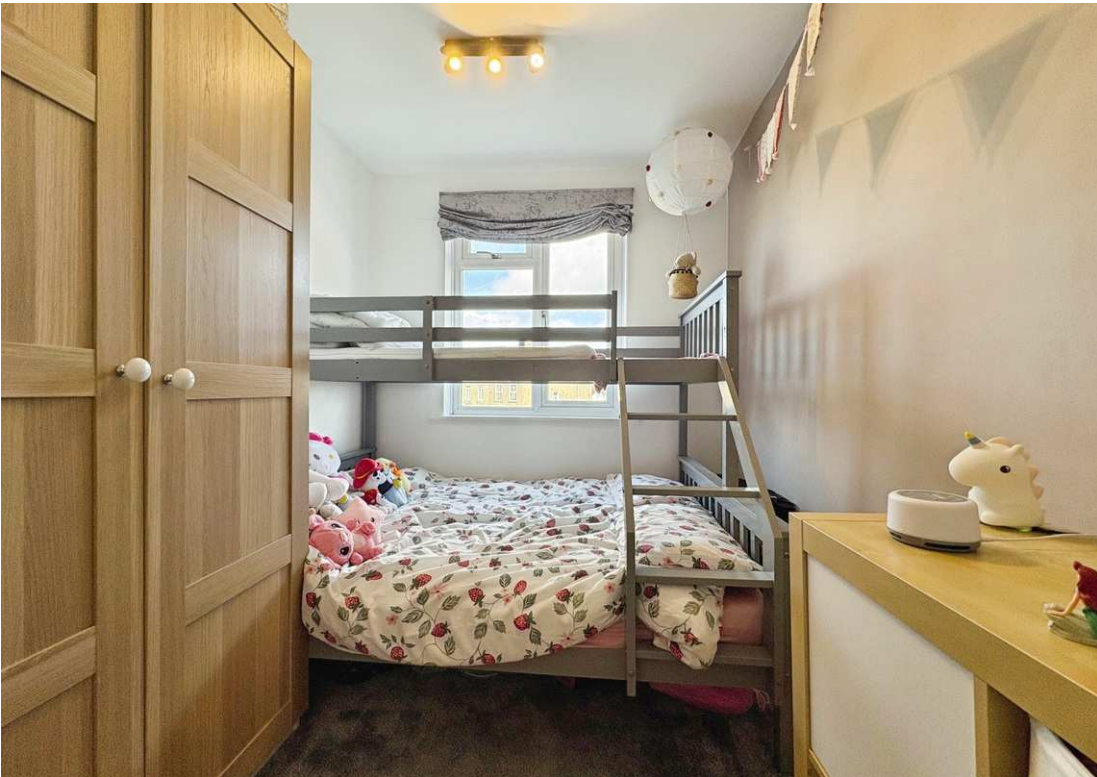
Asking Price £290,000
guy.rolfe@moving-you.co.uk

Freehold
www.moving-you.co.uk









Russell Avenue, Kingswood, Bristol, BS15 9QF

This super two-bedroom terraced home well located within a popular residential area of Kingswood, offering a practical layout and good condition – ideal for first-time buyers.

Inside, you'll find a living room with large bay windows, creating a bright central living space. The open-plan kitchen/diner benefits from natural light and has room for dining, making it a sociable area for everyday meals and entertaining. Upstairs, there is a master bedroom and a further double bedroom, providing flexible accommodation for a couple, small family or home office set up. The bathroom includes a jacuzzi-style bath, adding a touch of comfort and relaxation.

In the rear garden is the wooden cabin bar, perfect for hosting friends and enjoying evenings at home.

The location offers access to local schools such as Beacon Rise Primary school, making it convenient for buyers looking to settle in the area long-term. Nearby, you'll find a selection of local shops, cafés and everyday amenities around Kingswood and the surrounding Bristol suburbs.

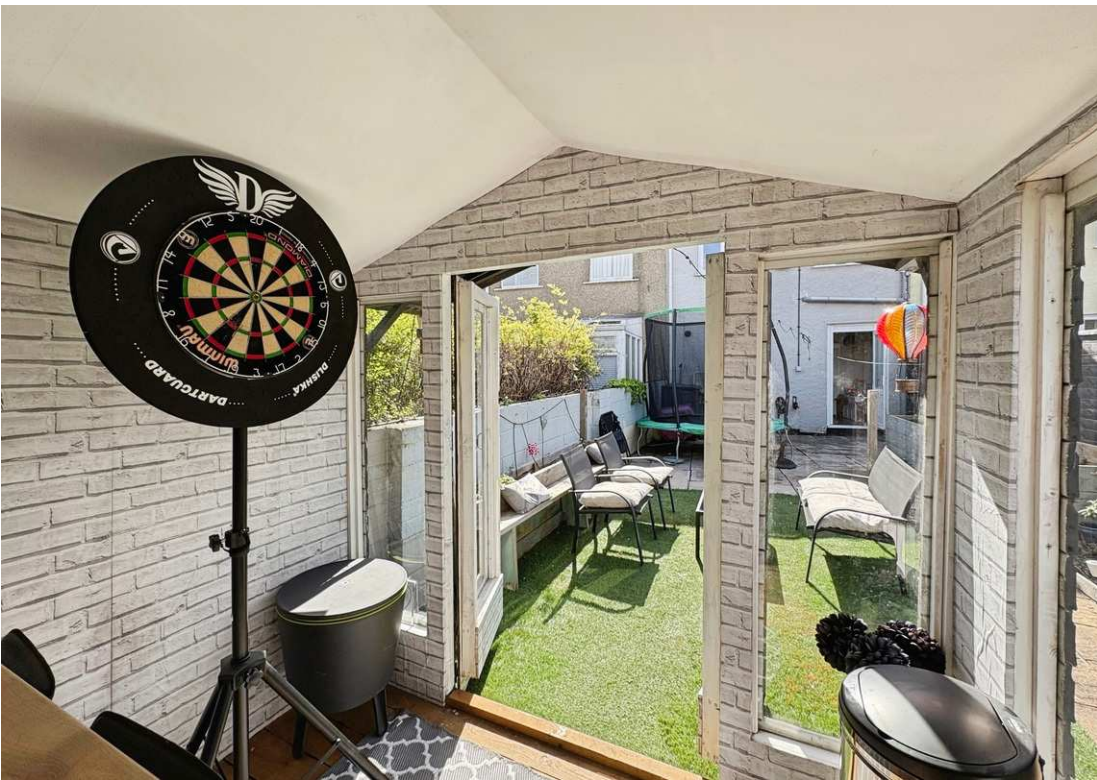
Public transport links are within easy reach, with regular bus routes into Bristol city centre and neighbouring areas, giving straightforward connections for commuting, shopping and leisure. From the city centre, Bristol Temple Meads station provides onward rail services towards Bath, Cardiff and London.

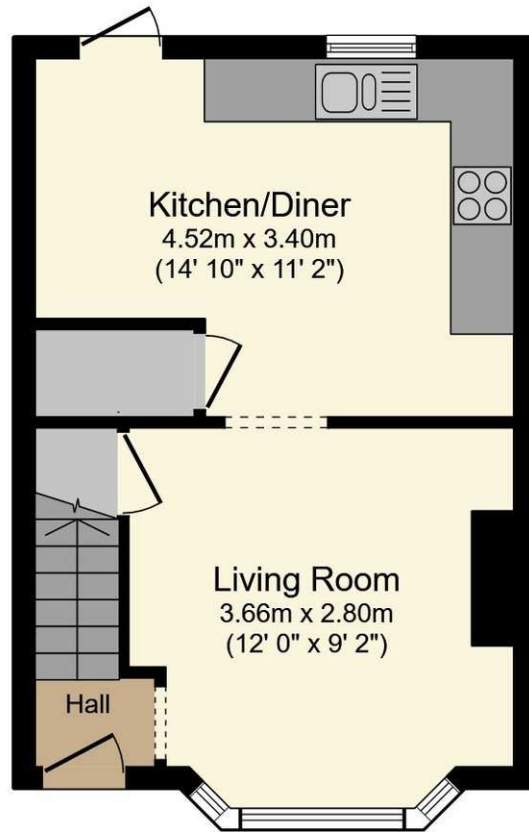
This two-bedroom terraced house for sale combines a practical interior with a useful garden feature and access to local amenities, making it well suited to first-time buyers looking to establish themselves in Bristol.

Council Tax Band B

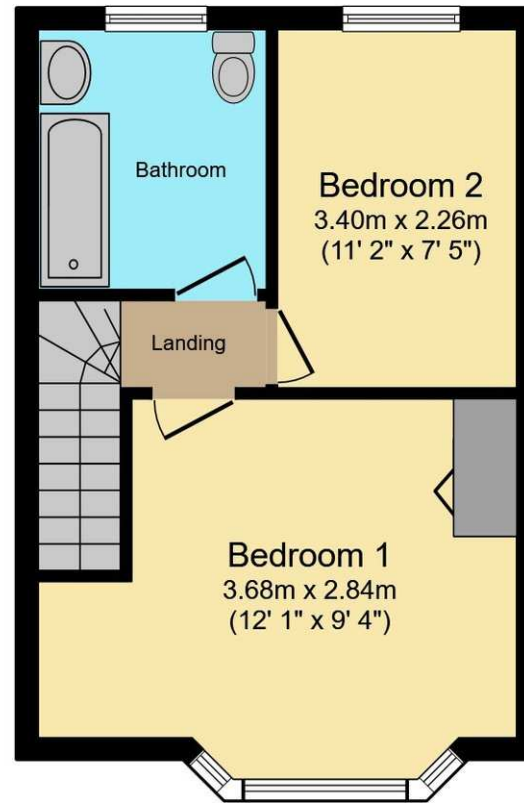








Ground Floor



First Floor

This floor plan is for illustrative purposes only. It is not drawn to scale. Any measurements, floor areas (including any total floor area), openings and orientations are approximate. No details are guaranteed, they cannot be relied upon for any purpose and do not form any part of any agreement. No liability is taken for any error, omission or misstatement. A party must rely upon its own inspection(s). Powered by www.Propertybox.io



Guy Rolfe Moving You

03334041188 option 3

guy.rolfe@moving-you.co.uk

PROPERTY MISDESCRIPTIONS ACT 1991: The Agents has not tested any apparatus, equipment, fixtures and fittings, or services, so cannot verify that they are in working order or fit for the purpose. The buyer is advised to obtain verification from his or her Professional Buyer, References to the Tenure of the property are based on information supplied by the Vendor. The agents have not had sight of the title documents. The buyer is advised to obtain verification from their Solicitor. You are advised to check the availability of any property before travelling any distance to view.

www.moving-you.co.uk