

OIEO

£290,000

Cheviot Way, Bristol, South Gloucestershire, BS30 8QB



Features

- Three-bedroom terraced family home
- Open-plan living and kitchen area
- Direct access to private garden
- Bright kitchen with natural light
- Three double bedrooms. flexible use

This beautiful three-bedroom terraced home set in Oldland Common, offers a practical layout in good condition, well suited to first-time buyers and young families.

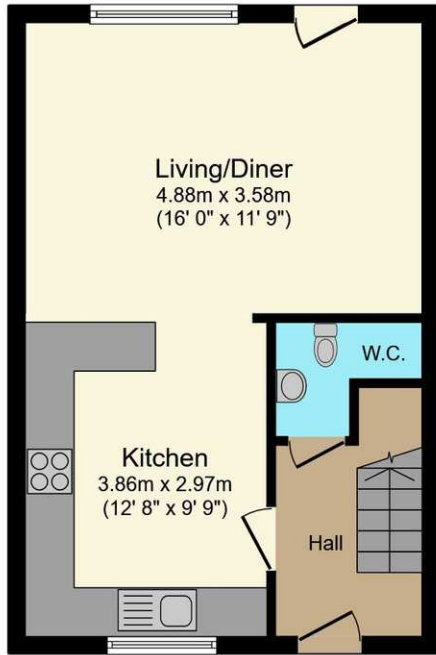
Enter the front door and the ground floor features an open-plan arrangement between the main living room and the modern style fitted kitchen, creating a sociable space for everyday living. The living room enjoys direct access to the garden, providing a pleasant outlook and an easy indoor-outdoor flow. The kitchen benefits from natural light, helping to make the space feel bright and usable throughout the day. Upstairs, there is are two double bedrooms and a practical third bedroom, offering flexible options for sleeping arrangements or a home office. The upstairs bathroom is fitted modern three piece suite.

Guy Rolfe - Bristol East

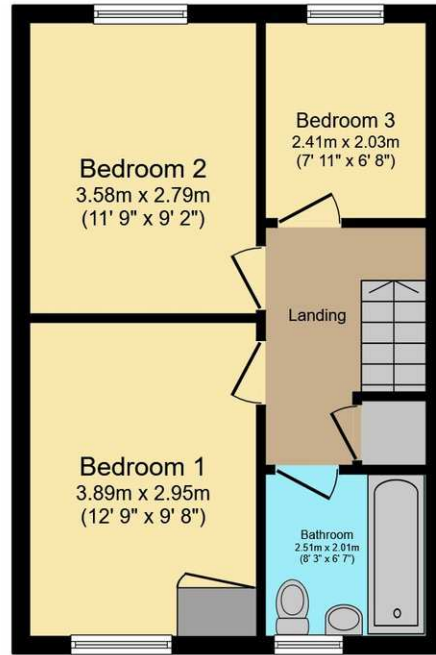
Parsons Walk, Bristol, Gloucestershire, BS30 5WA
03334041188 option 3
guy.rolfe@moving-you.co.uk



FLOORPLAN



Ground Floor

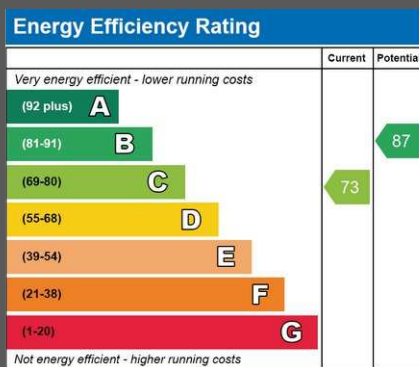


First Floor

This floor plan is for illustrative purposes only. It is not drawn to scale. Any measurements, floor areas (including any total floor area), openings and orientations are approximate. No details are guaranteed, they cannot be relied upon for any purpose and do not form any part of any agreement. No liability is taken for any error, omission or misstatement. A party must rely upon its own inspection(s). Powered by www.Propertybox.io



EPC



Guy Rolfe - Bristol East

Parsons Walk, Bristol, Gloucestershire, BS30 5WA
 03334041188 option 3
 guy.rolfe@moving-you.co.uk

