



High Street, Warmley, BS15 4NF
03334041188 option 3

Offers in excess of £300,000
guy.rolfe@moving-you.co.uk

Freehold
www.moving-you.co.uk









High Street, Warmley, BS15 4NF

Welcome to this charming terraced cottage, perfectly suited for first time buyers and professionals looking for a delightful home in a fantastic location. Situated near beautiful green spaces, walking and cycling routes, this property offers a peaceful retreat with all the perks of outdoor living right on your doorstep.

Inside, you'll find a well-maintained home in great condition throughout. There are two inviting reception rooms, providing plenty of space for relaxing with friends or entertaining guests. The kitchen is bright and airy, featuring ample natural light, making it a lovely spot for preparing meals or enjoying your morning coffee.

Upstairs, there are two comfortable bedrooms. The master bedroom provides a peaceful hideaway to unwind, while the second bedroom is a full double, ideal for guests. The home also includes a well-appointed modern downstairs bathroom.

The private rear garden, is a perfect outdoor haven for wildlife and ideal for a spot of gardening. Adding to the appeal is a dedicated an outside home office, offering a quiet and comfortable space to work or to pursue your hobbies.

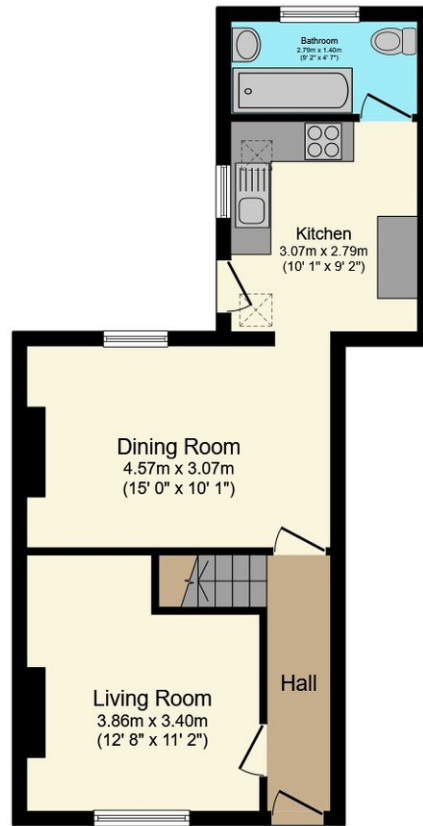
Whether you're taking your first step on the property ladder or seeking a smart base in a lovely area, this home ticks plenty of boxes. With good local amenities, and all the joys of nearby countryside, this property is ready to welcome its next owners! Book your viewing today to discover your new home.

Council Tax Band B

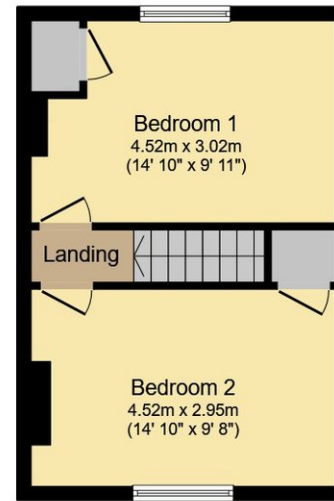








Ground Floor



First Floor



Outbuilding

This floor plan is for illustrative purposes only. It is not drawn to scale. Any measurements, floor areas (including any total floor area), openings and orientations are approximate. No details are guaranteed, they cannot be relied upon for any purpose and do not form any part of any agreement. No liability is taken for any error, omission or misstatement. A party must rely upon its own inspection(s). Powered by www.Propertybox.io



Guy Rolfe Moving You

03334041188 option 3

guy.rolfe@moving-you.co.uk

PROPERTY MISDESCRIPTIONS ACT 1991: The Agents has not tested any apparatus, equipment, fixtures and fittings, or services, so cannot verify that they are in working order or fit for the purpose. The buyer is advised to obtain verification from his or her Professional Buyer, References to the Tenure of the property are based on information supplied by the Vendor. The agents have not had sight of the title documents. The buyer is advised to obtain verification from their Solicitor. You are advised to check the availability of any property before travelling any distance to view.

www.moving-you.co.uk