



Birkdale, Warmley, BS30 8GH
03334041188 option 3

Asking Price £475,000
guy.rolfe@moving-you.co.uk

Freehold
www.moving-you.co.uk









Birkdale, Warmley, Bristol, BS30 8GH

This attractive and well-maintained four-bedroom detached family home offers bright open-plan living, a master en-suite, a single integral garage, and beautiful grounds in a fantastic, convenient location close to amenities and transport links.

Located within a cul-de-sac is this attractive four-bedroom detached house, ideal for families seeking a comfortable and welcoming home in a popular location. This well-maintained property is in good condition throughout, allowing you to move straight in and start making memories.

Step inside to discover a bright and inviting open-plan kitchen/diner, filled with natural light – perfect for gathering with family and friends, or simply enjoying a relaxed morning coffee. To the front of the home is a lovely dual aspect living room perfect for gathering in front of the tv on an evening. Finishing the ground floor is a handy downstairs toilet.

Upstairs, you'll find the master bedroom with a private en-suite, ideal for a little peace and quiet at the end of a busy day. There are also two generously sized double bedrooms, a cosy single bedroom, providing flexible accommodation for growing families, guests, or a home office and a three piece family bathroom suite.

The property also features an integral single garage, offering ample space for parking or storage. Outside, you'll be welcomed by well-tended grounds and access to great local cycling routes for some quality outdoor time.

This home is perfectly positioned for those who value convenience, with excellent transport links via the A4174 Ring Road and a selection of local amenities nearby. Whether you're commuting, shopping, or enjoying the fantastic local parks, everything you need is right on your doorstep.

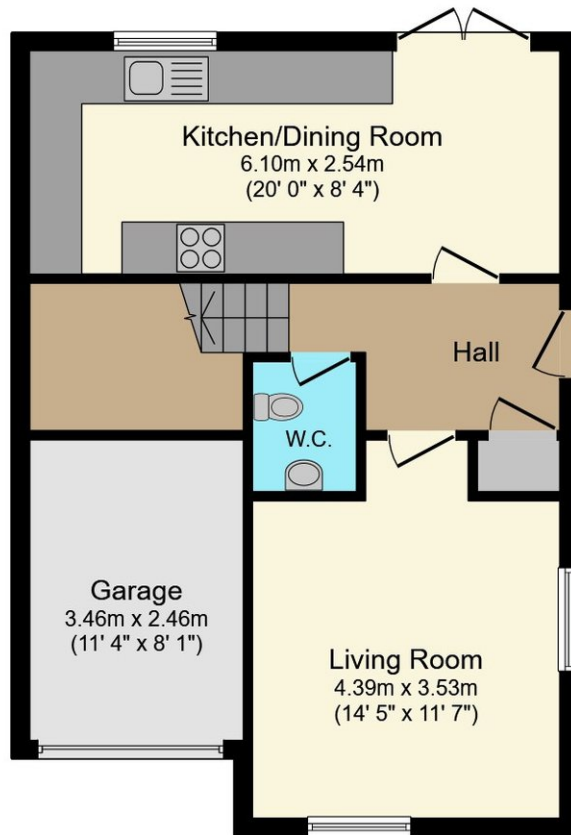
Don't miss the opportunity to make this delightful family home your own – it's ready and waiting to welcome its next owners!

Council Tax Band D

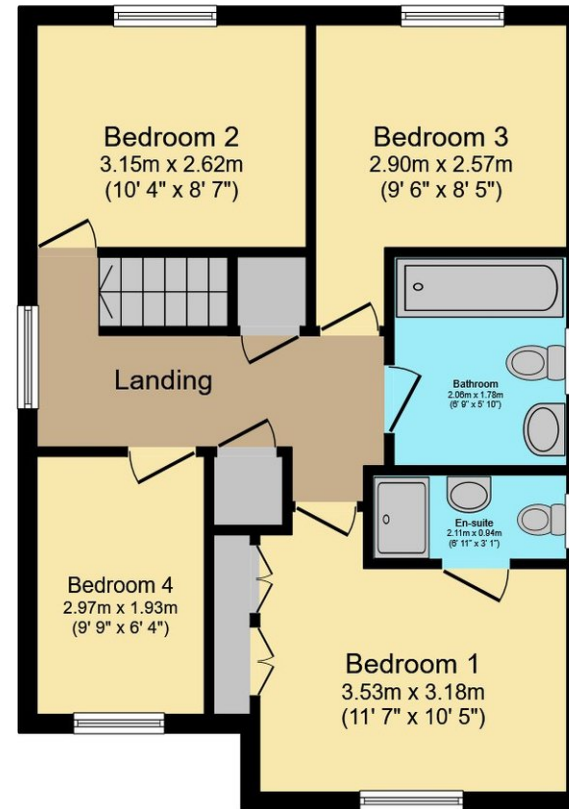








Ground Floor



First Floor

This floor plan is for illustrative purposes only. It is not drawn to scale. Any measurements, floor areas (including any total floor area), openings and orientations are approximate. No details are guaranteed, they cannot be relied upon for any purpose and do not form any part of any agreement. No liability is taken for any error, omission or misstatement. A party must rely upon its own inspection(s). Powered by www.Propertybox.io



Guy Rolfe Moving You

03334041188 option 3

guy.rolfe@moving-you.co.uk

PROPERTY MISDESCRIPTIONS ACT 1991: The Agents has not tested any apparatus, equipment, fixtures and fittings, or services, so cannot verify that they are in working order or fit for the purpose. The buyer is advised to obtain verification from his or her Professional Buyer, References to the Tenure of the property are based on information supplied by the Vendor. The agents have not had sight of the title documents. The buyer is advised to obtain verification from their Solicitor. You are advised to check the availability of any property before travelling any distance to view.

www.moving-you.co.uk