



Whistle Road, BS16 9QX
03334041188 option 3

Asking Price £200,000
guy.rolfe@moving-you.co.uk

Leasehold
www.moving-you.co.uk









Whistle Road, Mangotsfield, Bristol, BS16 9QX

This bright and neutrally decorated two-bedroom third floor flat features a spacious open-plan living area and modern kitchen, generous double bedrooms, and is ideally located near scenic walking and cycling routes—perfect for first-time buyers or investors seeking a stylish, move-in ready home in a popular area.

Welcome to this inviting, neutrally decorated two-bedroom third floor flat, perfectly suited for first-time buyers or savvy investors! Nestled in a picturesque area, ideal for walking and cycling routes, it's perfect for those who adore an active lifestyle or enjoy a peaceful stroll after a busy day.

Step inside to discover an airy open-plan living space, seamlessly connecting the reception and kitchen areas. This layout is brilliant for modern living, making it easy to entertain friends or spend quality time with family. The kitchen is graced with plenty of natural light, creating a bright and uplifting atmosphere that budding chefs and dinner party hosts will truly appreciate.

Both bedrooms are generously sized doubles, offering ample space for your bedroom furniture, or perhaps a welcoming guest room or a comfortable home office. The neutral décor throughout the flat provides a fresh canvas—easy for you to add your own personal touches and truly make it feel like home.

Whether you're taking your first step onto the property ladder or looking to expand your investment portfolio, this delightful flat offers a fantastic opportunity. Don't miss out—arrange your viewing today and see how this wonderful home could be the perfect fit for you!

Council Tax Band B

Leasehold 155 years from 1 January 2007

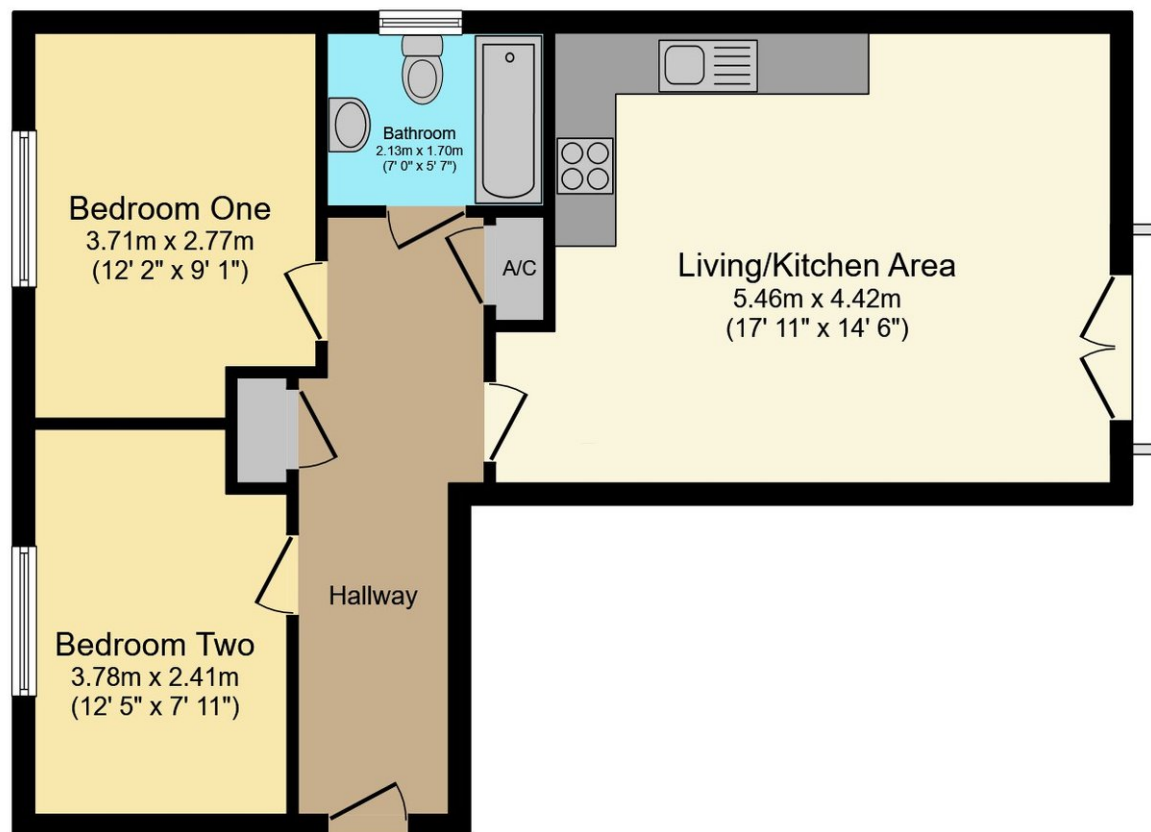
Ground Rent PA £359.68

Service Charge PA £863.28









Floor Plan

This floor plan is for illustrative purposes only. It is not drawn to scale. Any measurements, floor areas (including any total floor area), openings and orientations are approximate. No details are guaranteed, they cannot be relied upon for any purpose and do not form any part of any agreement. No liability is taken for any error, omission or misstatement. A party must rely upon its own inspection(s). Powered by www.Propertybox.io



Guy Rolfe Moving You

03334041188 option 3

guy.rolfe@moving-you.co.uk

PROPERTY MISDESCRIPTIONS ACT 1991: The Agents has not tested any apparatus, equipment, fixtures and fittings, or services, so cannot verify that they are in working order or fit for the purpose. The buyer is advised to obtain verification from his or her Professional Buyer, References to the Tenure of the property are based on information supplied by the Vendor. The agents have not had sight of the title documents. The buyer is advised to obtain verification from their Solicitor. You are advised to check the availability of any property before travelling any distance to view.

www.moving-you.co.uk