

Moving You



Lintham Drive, Bristol, BS15 9GB

03334041188 option 3

Asking Price £260,000

guy.rolfe@moving-you.co.uk

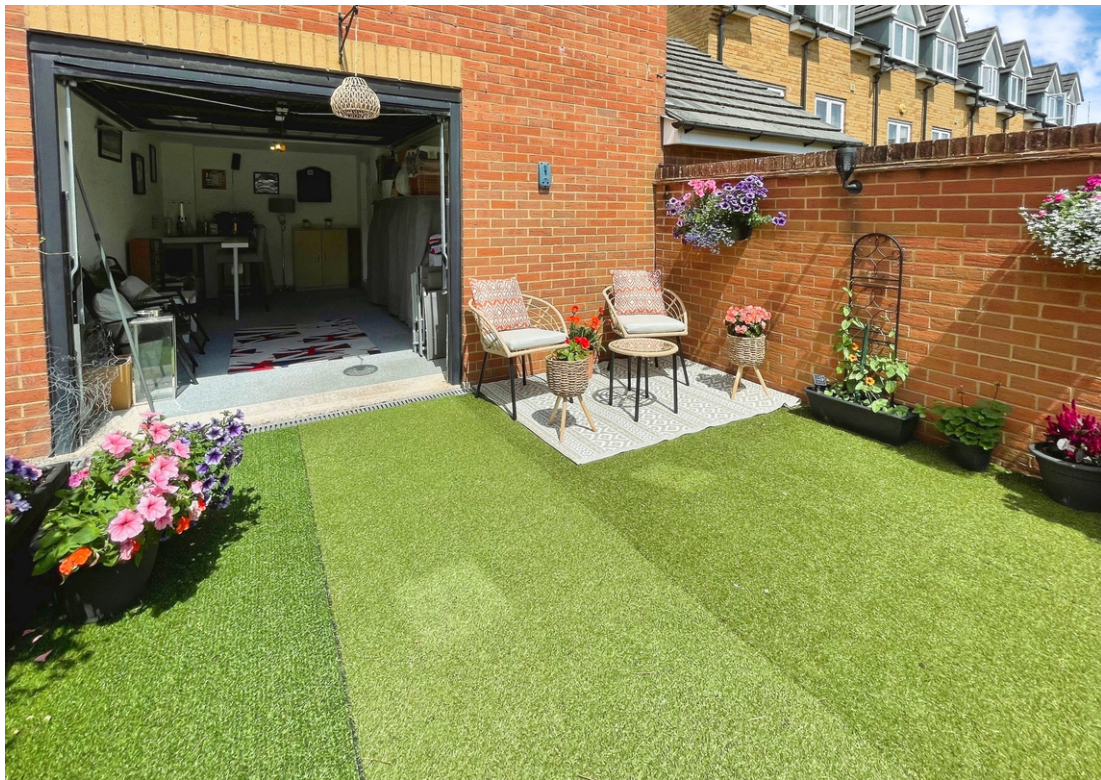
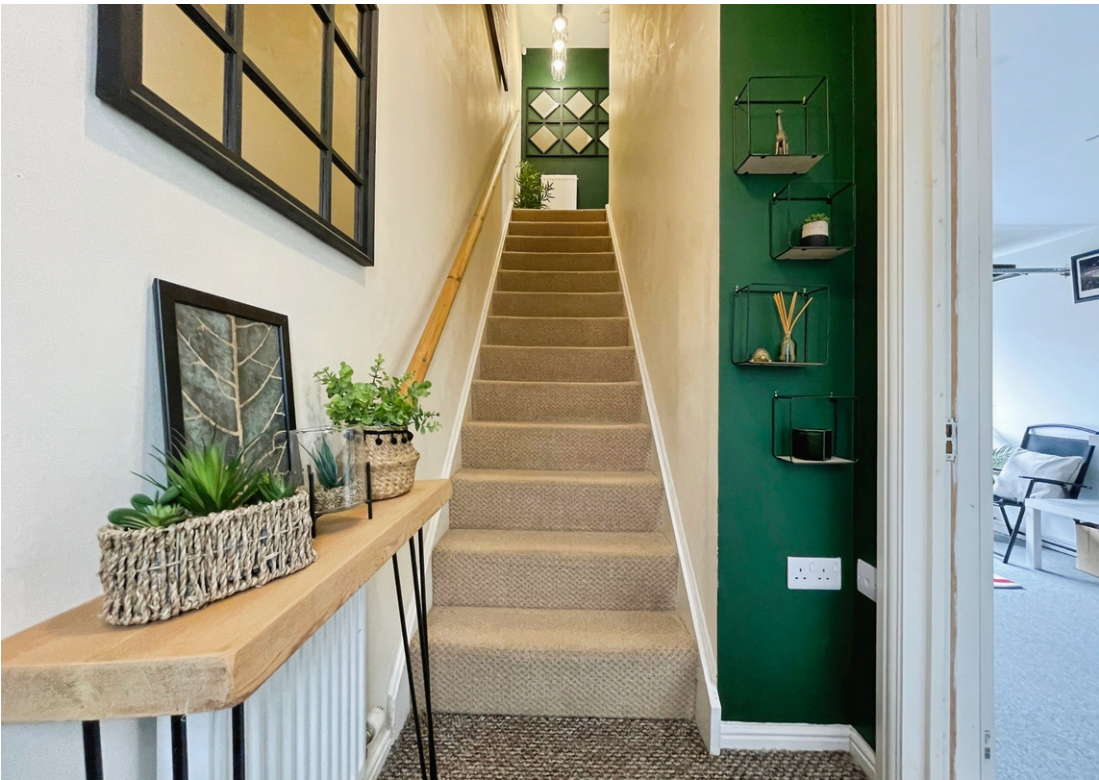
Freehold

www.moving-you.co.uk









Lintham Drive, Bristol, BS15 9GB

This charming detached coach house, ideal for a small family or first-time buyers, offers two bedrooms, a modern bathroom, a naturally lit kitchen, and an open-plan living/dining room, all conveniently located near public transport and local amenities.

Welcome! We're thrilled to present this delightful, detached coach house for sale, in great condition and conveniently situated close to public transport links and local amenities.

This inviting abode boasts two bedrooms, perfect for a small family or first-time buyers. The rooms are well-kept and brim with a comfortable atmosphere that promises restful nights.

The coach house features a charming, modern-style bathroom that blends functionality and style effortlessly. Whether you're preparing for the day ahead or winding down in the evening, this bathroom is a sanctuary of relaxation.

The kitchen is a joy to cook in, blessed with natural light that makes the space feel airy and uplifting. Whether you're an experienced chef or a beginner, this kitchen will inspire you to create delicious meals and enjoy them with loved ones.

The open-plan living/dining room offers a welcoming space for entertaining guests and spending quality time with family. The open-plan design not only enhances the sense of space but also encourages a smooth flow of energy throughout the home.

The ground floor offers direct access to the integral garage, where the current owners utilise this space as a home bar with up and over door, leading out to the parking area. Again the sellers have set this area up as a lovely designated outside garden space offering a seat in the sun and parking.

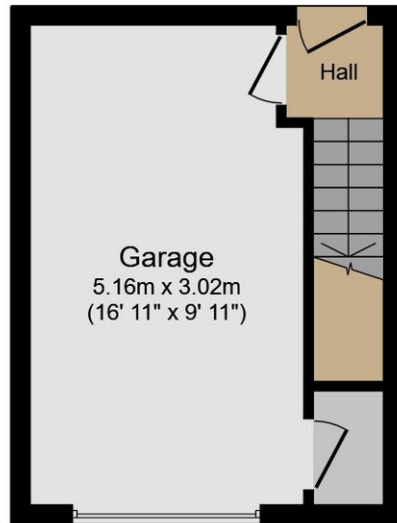
In conclusion, this coach house is not just a property for sale, it's a home waiting to be filled with laughter, love, and memories. If you're a first-time buyer looking for a place to call your own, this could be the perfect choice for you. Come and discover the potential of this charming property.

Council Tax Band B

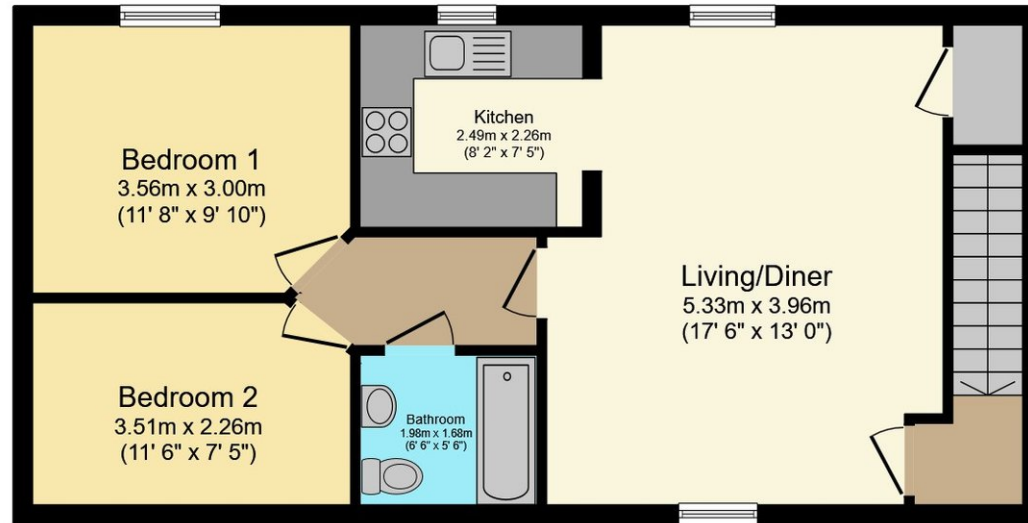








Ground Floor



First Floor

This floor plan is for illustrative purposes only. It is not drawn to scale. Any measurements, floor areas (including any total floor area), openings and orientations are approximate. No details are guaranteed, they cannot be relied upon for any purpose and do not form any part of any agreement. No liability is taken for any error, omission or misstatement. A party must rely upon its own inspection(s). Powered by www.Propertybox.io



Guy Rolfe Moving You

03334041188 option 3

guy.rolfe@moving-you.co.uk

PROPERTY MISDESCRIPTIONS ACT 1991: The Agents has not tested any apparatus, equipment, fixtures and fittings, or services, so cannot verify that they are in working order or fit for the purpose. The buyer is advised to obtain verification from his or her Professional Buyer, References to the Tenure of the property are based on information supplied by the Vendor. The agents have not had sight of the title documents. The buyer is advised to obtain verification from their Solicitor. You are advised to check the availability of any property before travelling any distance to view.

www.moving-you.co.uk