

Moving You



Gabriel Close, Bristol, BS30 8FG

03334041188 option 3

Asking Price £450,000

guy.rolfe@moving-you.co.uk

Freehold

www.moving-you.co.uk









Gabriel Close, Bristol, BS30 8FG

A sophisticated semi-detached house for sale featuring four bedrooms, an open-plan kitchen/dining space, a living room overlooking the garden, a garage with a home office, and excellent location benefits, including nearby schools and transport links, offering a fantastic investment opportunity for families or investors.

Presenting this semi-detached family home for sale, showcasing neutral decor throughout. This property boasts four bedrooms, a single bathroom, and two reception rooms, all designed with a touch of sophistication. The well-lit master bedroom comes with an en-suite for added convenience, while the other bedrooms are generously sized, with two doubles and a single, catering to all your family needs.

The heart of the house, the open-plan kitchen/diner, offers a dining space, perfect for family meals or entertaining guests. It's a space that definitely enhances the social aspect of cooking and dining. The home also features a living room with a serene garden view and small snug suitable for a computer desk.

The garage also includes a home office, ideal for those who work from home. Further features include parking providing a secure space for your vehicle, gas central heating, double glazing and a downstairs W.C.

Bordering Warmley and Cadbury Heath the property has excellent public transport links and nearby schools, making it ideal for families. Local amenities are just a stone's throw away, and for the outdoor enthusiast, you'll appreciate the cycling routes in the vicinity.

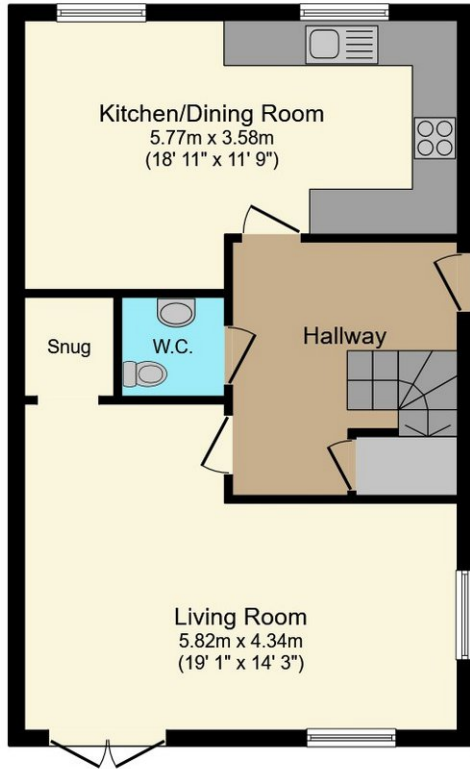
This home represents a fantastic investment opportunity, with its blend of functional living spaces, unique features, and fantastic location. Make it your family home or add it to your investment portfolio, the opportunities are endless.

Council Tax Band D

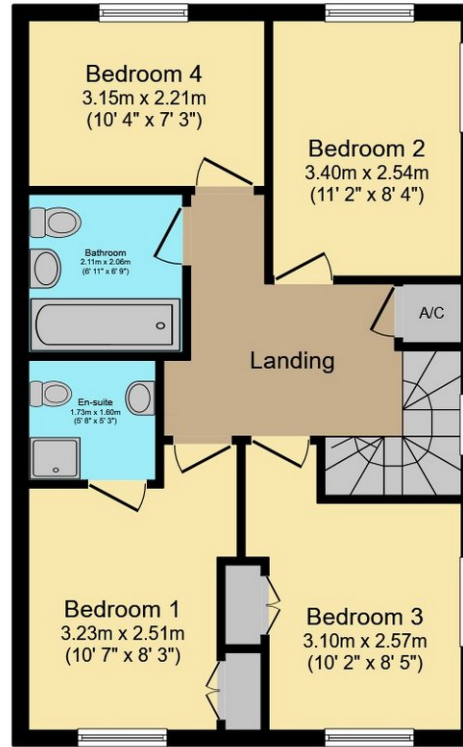




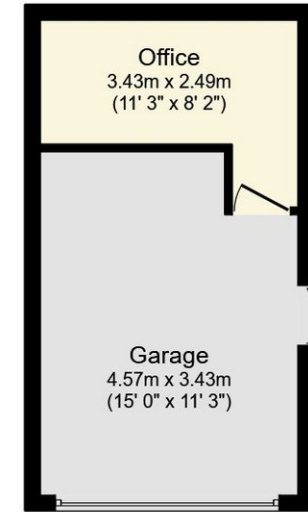




Ground Floor



First Floor



Garage

This floor plan is for illustrative purposes only. It is not drawn to scale. Any measurements, floor areas (including any total floor area), openings and orientations are approximate. No details are guaranteed, they cannot be relied upon for any purpose and do not form any part of any agreement. No liability is taken for any error, omission or misstatement. A party must rely upon its own inspection(s). Powered by www.Propertybox.io



Guy Rolfe Moving You

03334041188 option 3

guy.rolfe@moving-you.co.uk

PROPERTY MISDESCRIPTIONS ACT 1991: The Agents has not tested any apparatus, equipment, fixtures and fittings, or services, so cannot verify that they are in working order or fit for the purpose. The buyer is advised to obtain verification from his or her Professional Buyer, References to the Tenure of the property are based on information supplied by the Vendor. The agents have not had sight of the title documents. The buyer is advised to obtain verification from their Solicitor. You are advised to check the availability of any property before travelling any distance to view.

www.moving-you.co.uk