



Moving You

New Cheltenham Road, BS15 4RL

03334041188 option 3

Asking Price £325,000

[guy.rolfe@moving-you.co.uk](mailto:guy.rolfe@moving-you.co.uk)

Freehold

[www.moving-you.co.uk](http://www.moving-you.co.uk)





choose  
happy





## New Cheltenham Road, Bristol, BS15 4RL

This charming end-of-terrace house for sale features a tasteful, open-plan layout with two reception rooms, a light-filled open plan kitchen and dining area, three well-appointed bedrooms, and a luxurious bathroom, all in pristine condition, ideally located with great transport links and local amenities, perfect for first-time buyers or families.

Welcome to this charming end of terrace house that has been renovated and updated from top to bottom. The property is now immaculate and modern throughout and a haven of peace and tranquillity, with every room tastefully decorated and presented in pristine condition.

The home boasts two gorgeous reception rooms, providing ample space for relaxation and entertainment. The living room is cosy with a feature fireplace recess, perfect for curling up in front of the T.V.

Cooking enthusiasts will be amazed by the open plan kitchen/diner which is to die for. Modern and sleek units with integrated appliances, it complemented by a spacious dining area and breakfast bar, ideal for family meals and get-togethers.

This family home features three well-appointed bedrooms. The master bedroom is the epitome of comfort, while the second bedroom, a good size double, has the built in cupboard housing the gas combi boiler. The third bedroom, an L-shaped single, perfect for a child or for use as a home office.

The bathroom offers a touch of luxury with with a free-standing bath and sizeable shower cubicle, offering a tranquil space for a relaxing soak after a long day.

The house is ideally situated with excellent public transport links and proximity to local schools and amenities in Kingswood, making it perfect for first-time buyers or families.

Book a viewing today to fully appreciate what this delightful home has to offer.

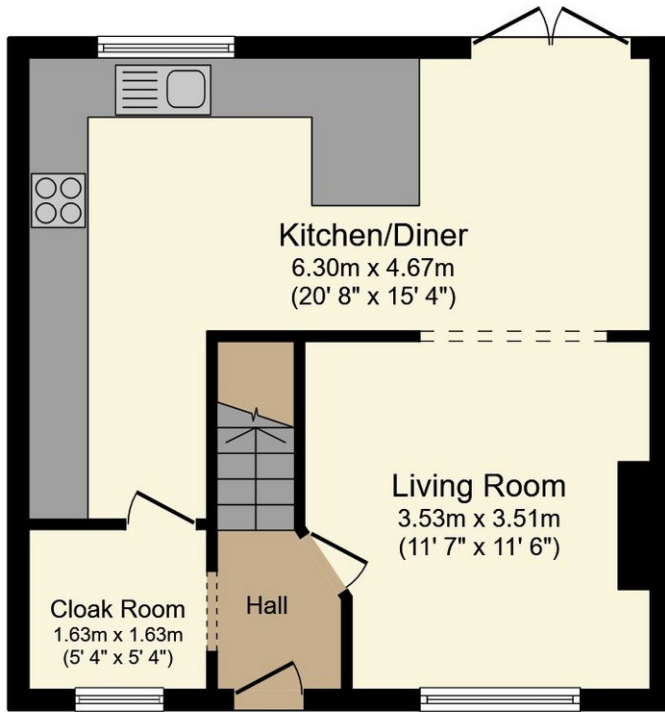
Council Tax Band B



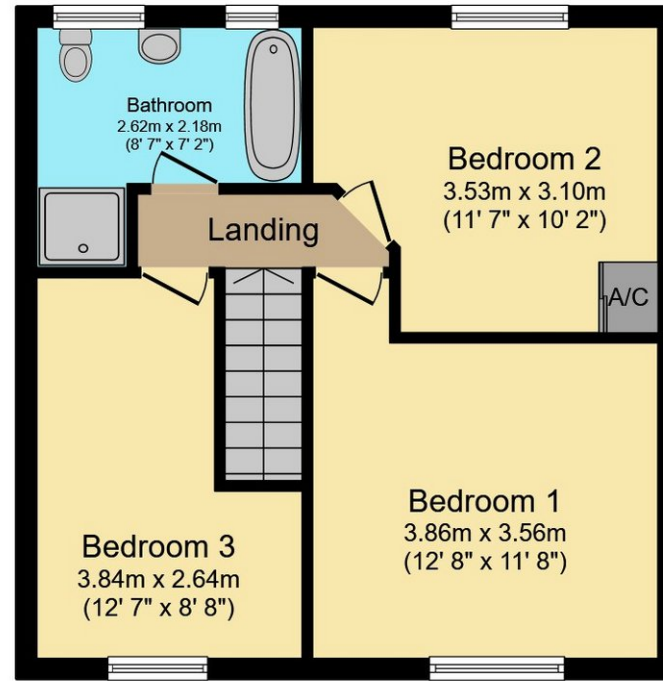








Ground Floor



First Floor

This floor plan is for illustrative purposes only. It is not drawn to scale. Any measurements, floor areas (including any total floor area), openings and orientations are approximate. No details are guaranteed, they cannot be relied upon for any purpose and do not form any part of any agreement. No liability is taken for any error, omission or misstatement. A party must rely upon its own inspection(s). Powered by [www.Propertybox.io](http://www.Propertybox.io)



Guy Rolfe Moving You

03334041188 option 3

[guy.rolfe@moving-you.co.uk](mailto:guy.rolfe@moving-you.co.uk)

PROPERTY MISDESCRIPTIONS ACT 1991: The Agents has not tested any apparatus, equipment, fixtures and fittings, or services, so cannot verify that they are in working order or fit for the purpose. The buyer is advised to obtain verification from his or her Professional Buyer, References to the Tenure of the property are based on information supplied by the Vendor. The agents have not had sight of the title documents. The buyer is advised to obtain verification from their Solicitor. You are advised to check the availability of any property before travelling any distance to view.

[www.moving-you.co.uk](http://www.moving-you.co.uk)