

Property Particulars

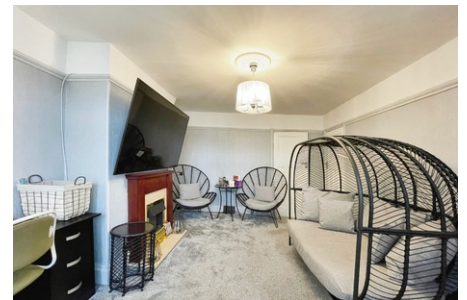


Syston Way, Kingswood, Bristol, BS15 1UG

OIEO £260,000

This charming end-of-terrace house features a welcoming living room, modern fitted kitchen with larder, two spacious bedrooms, a functional upstairs bathroom, all in a prime location near public transport, amenities, and schools within Kingswood.

One of the unique features of this property is the beautiful garden. It's a fantastic space to play, a spot for gardening if you have a green thumb or subject to local authority planning offer a fantastic building opportunity for investors.



- End of terrace home
- Charming property condition
- Warm reception room
- Two bedrooms
- Functional bathroom design
- Build opportunity subject to planning