

The logo for 'Moving You' is located in the top right corner. It consists of the words 'Moving You' in a black, cursive-style font on a bright yellow rectangular background. A small house icon is visible in the bottom right corner of the yellow box.

Thirlmere Court, Bridgegate, BS30 5XP

03334041188 option 3

Offers in Excess £425,000

guy.rolfe@moving-you.co.uk

Freehold

www.moving-you.co.uk





11 12 1 2
10 FARMERS 3
9 FRESH PRODUCE 4
8 5
7 6





Thirlmere Court, Bridgegate, Bristol, BS30 5XP

This charming 3-bedroom detached property offers two sizeable reception rooms, cloakroom and conservatory, a lush garden, and a single garage, and is ideally located near green spaces and schools, making it perfect for first-time buyers or families looking to personalise their dream home.

Welcome to this delightful three bedroom detached property, a charming abode that's just waiting for you to make it your own. The residence boasts two sizeable reception rooms, a cloakroom and a conservatory, perfect for entertaining guests or enjoying cosy nights in with the family.

The light and airy kitchen/diner measuring an impressive 16 by 11'8 offers dual aspect windows overlooking the corner plot garden and offers cooking enthusiasts the opportunity to cook up a storm. The three bedrooms offer generous space for a growing family or for guests to stay over. The three piece bathroom suite completes the living accommodation, offering a haven for relaxation at the end of a long day.

Step outside and you'll be greeted by a lush garden, a little oasis that's perfect for those warm summer days. Plus, the property comes with a single detached garage, providing that all-important extra storage space or a safe spot for your vehicle.

The location couldn't be better. You're spoiled with green spaces ideal for leisurely strolls or active jogs via the Bristol & Bath cycle way, and bike routes for those weekend adventures. Plus, it's near several schools, making morning commutes a breeze for those with little ones.

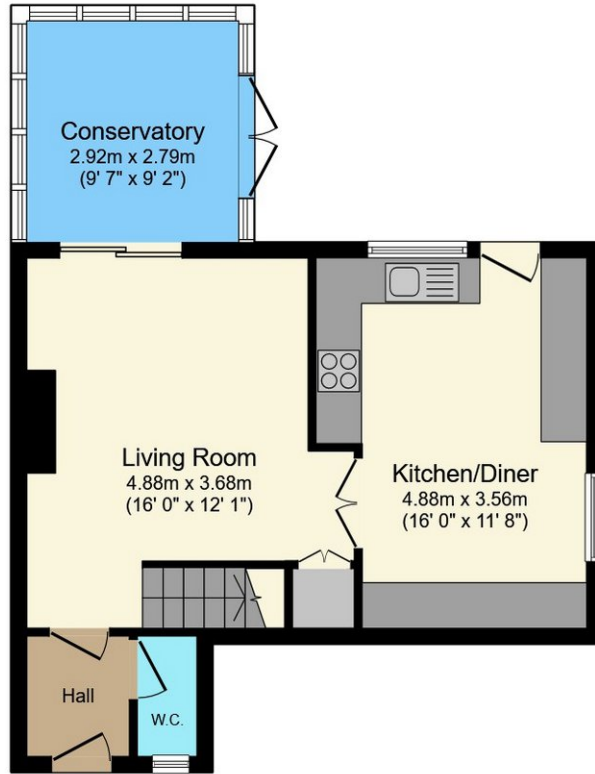
This property is ideal for families seeking an upsize in a friendly community. With its unique features and fantastic location, this property is just awaiting your personal touch. Don't miss out on this opportunity to create your own dream living space!

Council Tax Band D

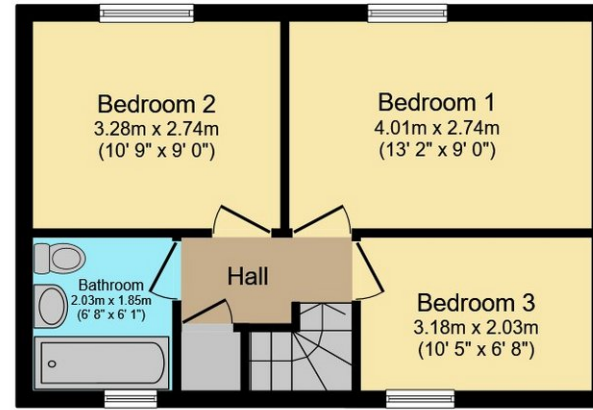








Ground Floor



First Floor

This floor plan is for illustrative purposes only. It is not drawn to scale. Any measurements, floor areas (including any total floor area), openings and orientations are approximate. No details are guaranteed, they cannot be relied upon for any purpose and do not form any part of any agreement. No liability is taken for any error, omission or misstatement. A party must rely upon its own inspection(s). Powered by www.Propertybox.io



Guy Rolfe Moving You

03334041188 option 3

guy.rolfe@moving-you.co.uk

PROPERTY MISDESCRIPTIONS ACT 1991: The Agents has not tested any apparatus, equipment, fixtures and fittings, or services, so cannot verify that they are in working order or fit for the purpose. The buyer is advised to obtain verification from his or her Professional Buyer, References to the Tenure of the property are based on information supplied by the Vendor. The agents have not had sight of the title documents. The buyer is advised to obtain verification from their Solicitor. You are advised to check the availability of any property before travelling any distance to view.

www.moving-you.co.uk