

The logo for 'Moving You' is located in the top right corner. It consists of the words 'Moving You' in a black, cursive-style font on a yellow rectangular background. A small house icon is visible in the bottom right corner of the yellow box.

Moving You



High Street, Warmley, Bristol

03334041188 option 3

Asking Price £290,000

[guy.rolfe@moving-you.co.uk](mailto:guy.rolfe@moving-you.co.uk)

Freehold

[www.moving-you.co.uk](http://www.moving-you.co.uk)









## High Street, Bristol, BS15 4NF

This charming terraced cottage, perfect for couples, features two reception rooms, a modern fitted kitchen, two cosy bedrooms, a four-piece bathroom, and a delightful garden, all situated in a friendly neighbourhood with excellent transport links and nearby green spaces such as Warmley Forest and the Bristol & Bath cycle way.

Welcome to this charming terraced cottage that is now on the market, ready and waiting to become the perfect home for a lucky couple. This property is neutrally decorated throughout, creating a beautiful living space that is just waiting for you to add your own personal touches.

As you step inside, you will find two well proportioned reception rooms that provide ample space for relaxation and entertainment. Whether you're hosting a dinner party or enjoying a quiet night in front of the TV, these rooms offer the ideal setting for every occasion.

This lovely home boasts a modern style fitted kitchen, making cooking a delight rather than a chore. Whether you're a seasoned chef or a beginner in the kitchen, this space is sure to inspire your culinary creativity.

The property offers two cosy bedrooms. The master bedroom is spacious and inviting, providing a wonderful space to unwind after a long day. The second bedroom features built-in wardrobes, offering a practical storage solution and making the room feel even more spacious.

The house also has a four-piece bathroom that offers all the comforts you need.

One of the standout features of this property is the garden. It provides a wonderful outdoor space where you can enjoy the fresh air, have a summer barbecue, or simply relax with a good book.

The cottage is situated in a friendly neighbourhood with a strong local community. It's surrounded by green spaces such as Warmley Forest, walking routes, and cycling routes via the Bristol & Bath cycle path, and is also close to public transport links, making commuting a breeze.

In conclusion, this property offers a fantastic opportunity for couples seeking a comfortable, welcoming home in a great location. Don't miss out on this gem!

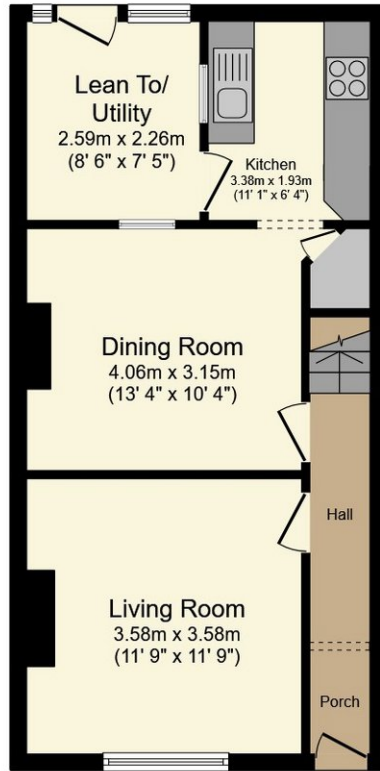
Council Tax Band B



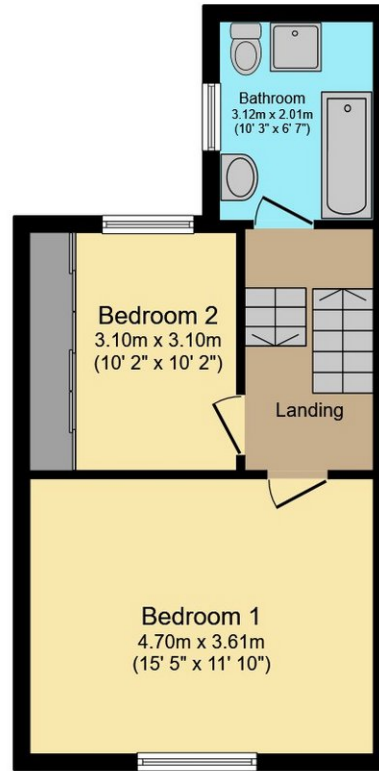








Ground Floor



First Floor

This floor plan is for illustrative purposes only. It is not drawn to scale. Any measurements, floor areas (including any total floor area), openings and orientations are approximate. No details are guaranteed, they cannot be relied upon for any purpose and do not form any part of any agreement. No liability is taken for any error, omission or misstatement. A party must rely upon its own inspection(s). Powered by [www.Propertybox.io](http://www.Propertybox.io)



Guy Rolfe Moving You

03334041188 option 3

[guy.rolfe@moving-you.co.uk](mailto:guy.rolfe@moving-you.co.uk)

PROPERTY MISDESCRIPTIONS ACT 1991: The Agents has not tested any apparatus, equipment, fixtures and fittings, or services, so cannot verify that they are in working order or fit for the purpose. The buyer is advised to obtain verification from his or her Professional Buyer, References to the Tenure of the property are based on information supplied by the Vendor. The agents have not had sight of the title documents. The buyer is advised to obtain verification from their Solicitor. You are advised to check the availability of any property before travelling any distance to view.

[www.moving-you.co.uk](http://www.moving-you.co.uk)