

Moving You



Mount Hill Road, Hanham, Bristol

07507 189300

Asking Price £390,000

[guy.rolfe@moving-you.co.uk](mailto:guy.rolfe@moving-you.co.uk)

Freehold

[www.moving-you.co.uk](http://www.moving-you.co.uk)



















## Mount Hill Road, Bristol, BS15 8QT

Charming detached bungalow with inviting living spaces, three bedrooms, a modern 4 piece bathroom, garage, and beautiful views, located near Beacon Rise Primary School and local amenities in Hanham High Street, perfect for families and couples looking to add their own personal touch.

Welcome to this charming detached bungalow, currently on the market and in good condition. It's a warm, inviting home that is just waiting for you to add your own personal touch.

As you step inside, you'll be greeted by a lovely reception room boasting a cosy wood burning stove, the perfect spot for family gatherings or evening relaxation. The open-plan kitchen/diner is a dream for anyone who loves to cook or entertain. It's flooded with natural light that makes it a beautiful space to spend time in.

The property has three bedrooms, one which would also be perfect for home working. The master bedroom is a real delight, with plenty of natural light that gives it a warm and comforting atmosphere. The second bedroom is a generous double room, ready to be made into a comfortable retreat and bedroom three which is a flexible multi use space.

The four piece bathroom is a standout feature, with a modern free-standing bath that promises relaxation after a long day.

One of the many features of this property is the garage, offering extra space for parking or storage and the summer house with its very own hot tub. Another feature that makes this bungalow a real catch is the beautiful view that you can enjoy from the comfort of your own home.

The property is ideally located near to Beacon Rise Primary School and local amenities in Hanham High Street, making it perfect for families and couples alike. The nearby amenities provide convenience, while the close proximity to schools makes it a great option for those with children.





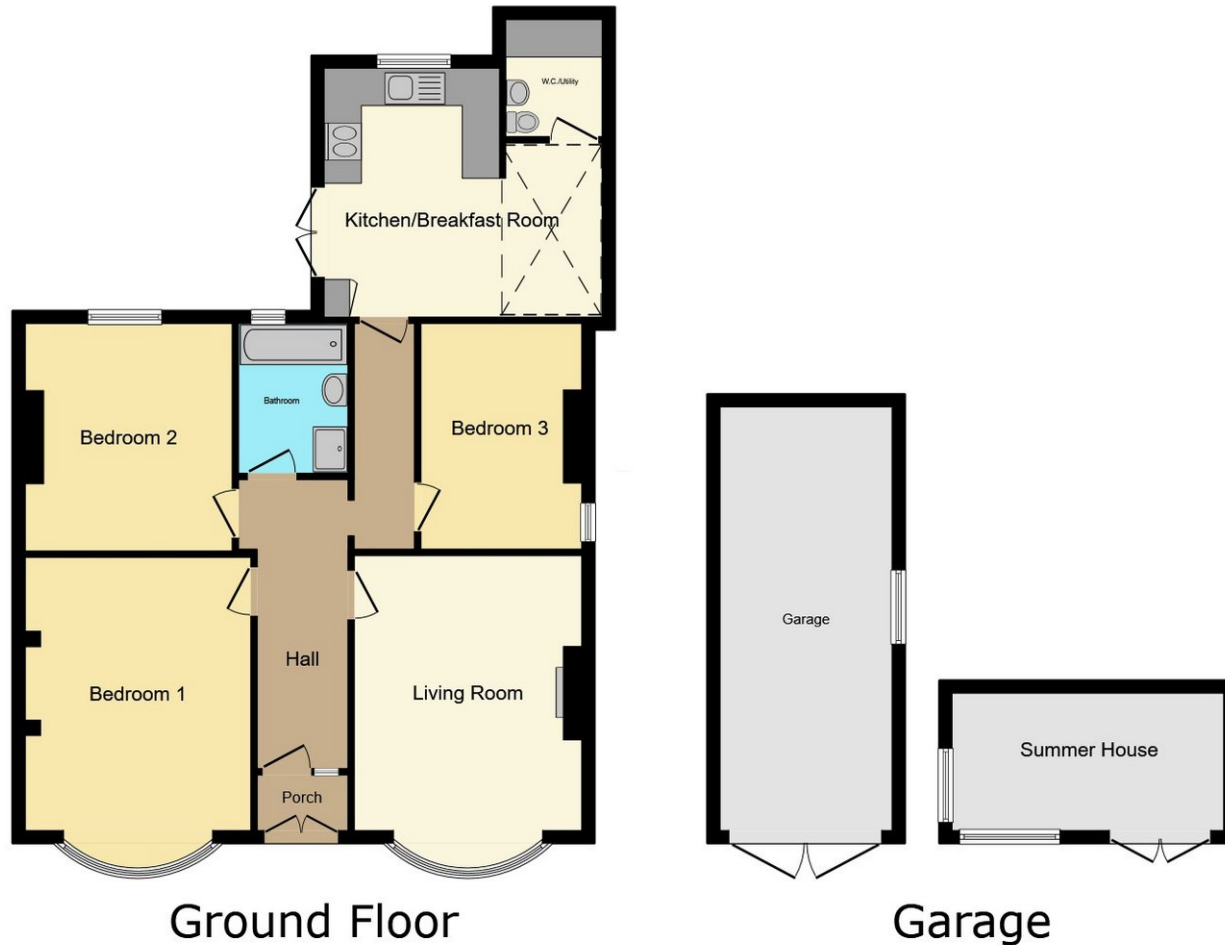












This floor plan is for illustrative purposes only. It is not drawn to scale. Any measurements, floor areas (including any total floor area), openings and orientations are approximate. No details are guaranteed, they cannot be relied upon for any purpose and do not form any part of any agreement. No liability is taken for any error, omission or misstatement. A party must rely upon its own inspection(s). Powered by [www.Propertybox.io](http://www.Propertybox.io)

Guy Rolfe Moving You

07507 189300

[guy.rolfe@moving-you.co.uk](mailto:guy.rolfe@moving-you.co.uk)

PROPERTY MISDESCRIPTIONS ACT 1991: The Agents has not tested any apparatus, equipment, fixtures and fittings, or services, so cannot verify that they are in working order or fit for the purpose. The buyer is advised to obtain verification from his or her Professional Buyer, References to the Tenure of the property are based on information supplied by the Vendor. The agents have not had sight of the title documents. The buyer is advised to obtain verification from their Solicitor. You are advised to check the availability of any property before travelling any distance to view.

[www.moving-you.co.uk](http://www.moving-you.co.uk)