

*Moving You*



Ashcombe Crescent, BS30 5NY

03334041188 option 3

Asking Price £370,000

[guy.rolfe@moving-you.co.uk](mailto:guy.rolfe@moving-you.co.uk)

Freehold

[www.moving-you.co.uk](http://www.moving-you.co.uk)



















## Ashcombe Crescent, Bristol, BS30 5NY

Welcome to this charming semi-detached house, an ideal home for families and couples alike. As you enter, you'll notice the property has been neutrally decorated, giving off an inviting and calming atmosphere that's ready for you to make your own.

This home boasts three lovely bedrooms. The master bedroom comes with an en-suite for your convenience, while the second bedroom is a comfortable double, and the third bedroom is a cosy single. Each room is a blank canvas, ready for you to put your personal touch on it.

The bathroom is a modern sanctuary, perfect for unwinding after a long day.

Moving on to the heart of the home, the kitchen. Recently refurbished with modern appliances, it's a space that will inspire your culinary creativity. Whether it's a family meal or a romantic dinner for two, this kitchen has everything you need.

The property also features two reception rooms. The living room has a feature TV and entertainment wall design, perfect for family movie nights or entertaining guests. The second is a light-filled conservatory, a beautiful space where you can relax and enjoy views of the garden.

Speaking of the outdoors, the property backs on to a cycle path, providing a lovely spot for cycling enthusiasts and dog walkers. Plus, there's a garage that offers extra storage and a driveway for parking.

This house is more than just a property; it's a home waiting for its next loving owners. It's a place where memories are made, and joy is shared. Could this be your dream home?

Council Tax D





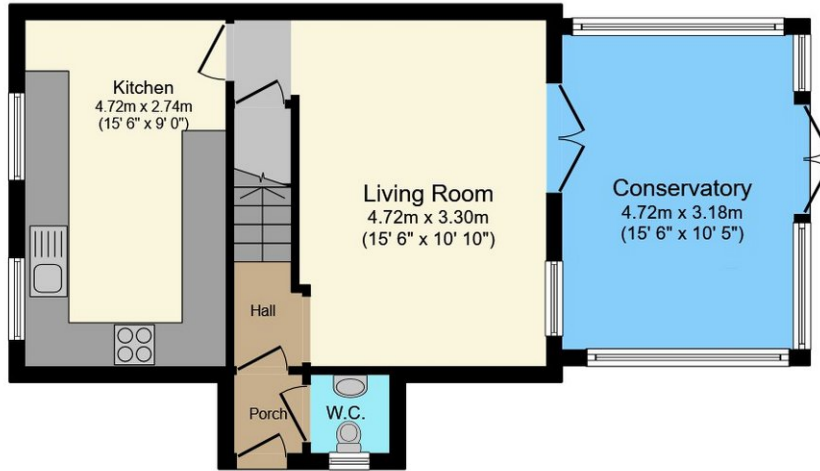




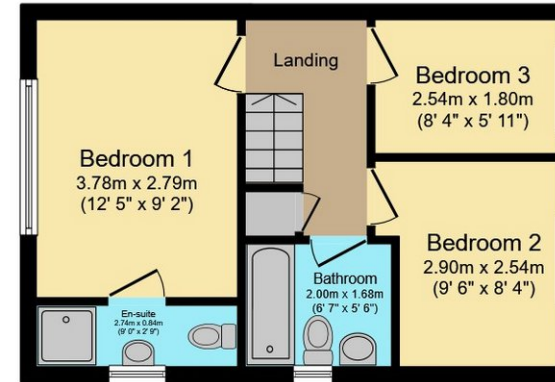








Ground Floor



First Floor

This floor plan is for illustrative purposes only. It is not drawn to scale. Any measurements, floor areas (including any total floor area), openings and orientations are approximate. No details are guaranteed, they cannot be relied upon for any purpose and do not form any part of any agreement. No liability is taken for any error, omission or misstatement. A party must rely upon its own inspection(s). Powered by [www.Propertybox.io](http://www.Propertybox.io)



Guy Rolfe Moving You

03334041188 option 3

[guy.rolfe@moving-you.co.uk](mailto:guy.rolfe@moving-you.co.uk)

PROPERTY MISDESCRIPTIONS ACT 1991: The Agents has not tested any apparatus, equipment, fixtures and fittings, or services, so cannot verify that they are in working order or fit for the purpose. The buyer is advised to obtain verification from his or her Professional Buyer, References to the Tenure of the property are based on information supplied by the Vendor. The agents have not had sight of the title documents. The buyer is advised to obtain verification from their Solicitor. You are advised to check the availability of any property before travelling any distance to view.

[www.moving-you.co.uk](http://www.moving-you.co.uk)